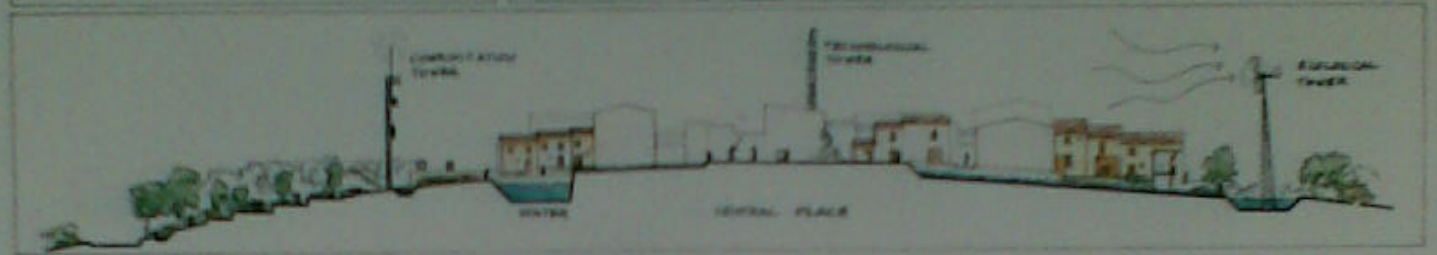


SECTION A-A
SECTION B-B
SECTION C-C



UIA: UNESCO
EXHIBITION & AWARDS '87
 BRIGHTON ASSEMBLY 19-19th JULY 1987

2

PROJECT S. RUFINA
 ITALY
 PROPOSED SOLUTION



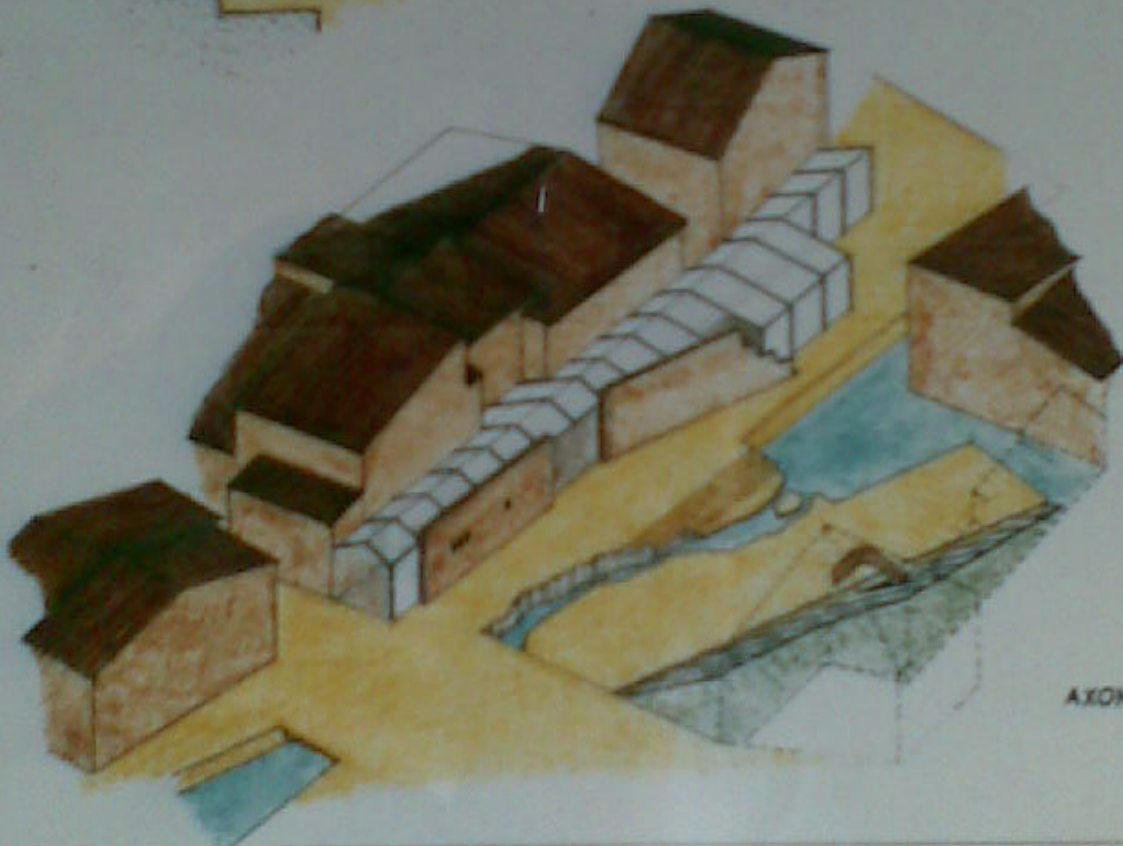
11



PLAN



PERSPECTIVE

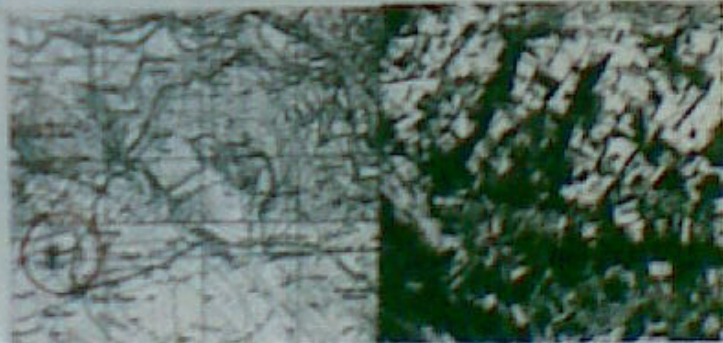


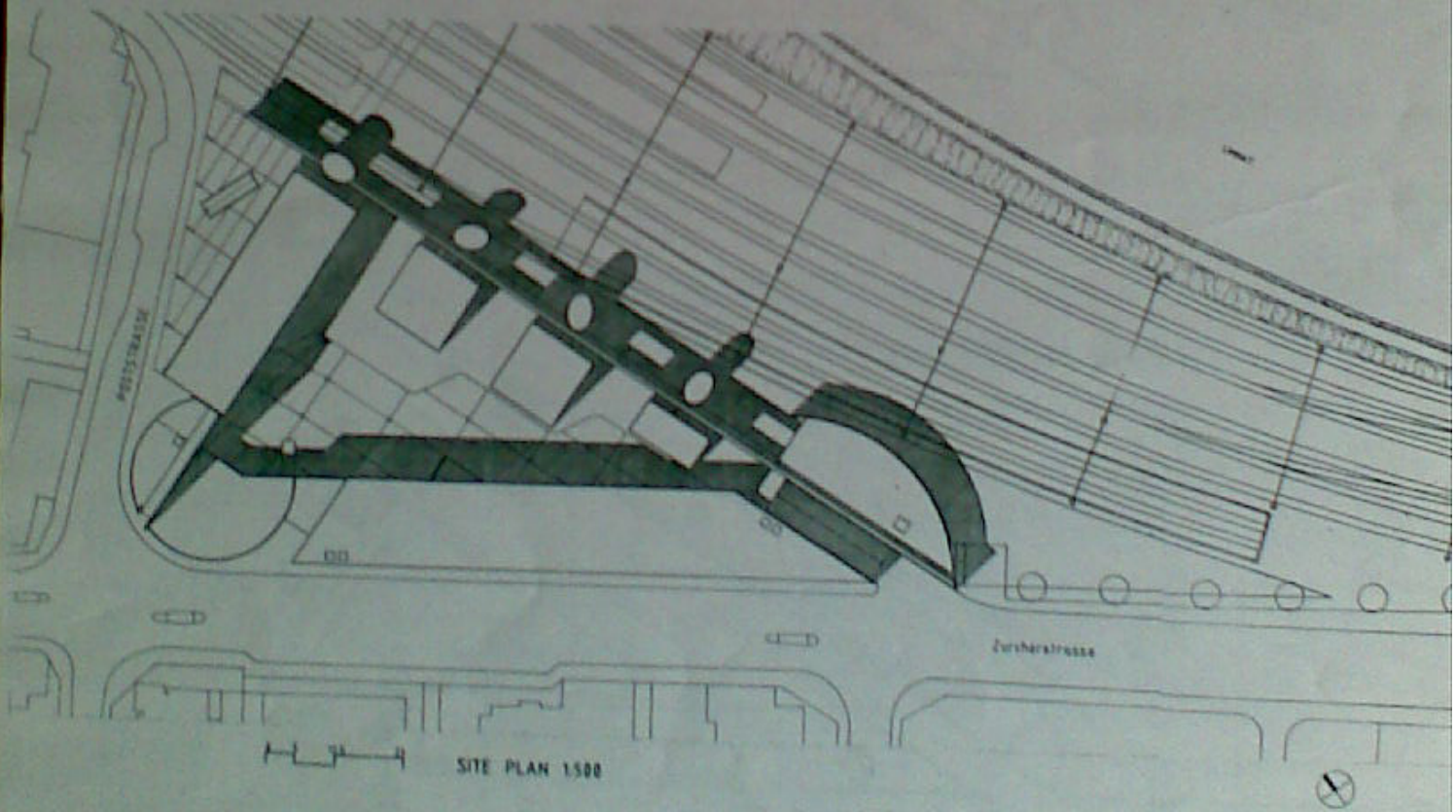
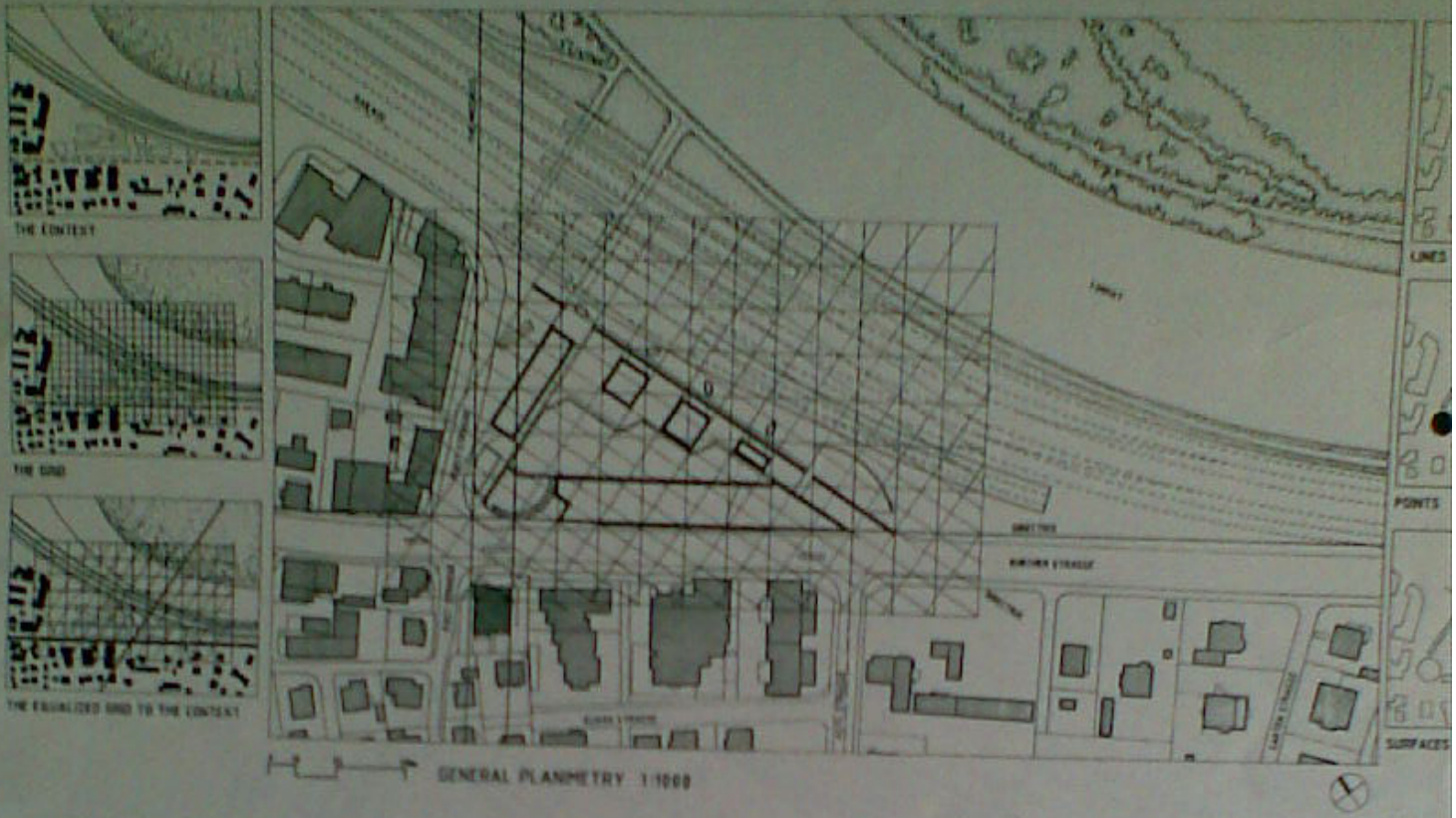
AXONOMETRIC

UIA: UNESCO
EXHIBITION & AWARDS '87
BRIGHTON ASSEMBLY 09-10th JULY 1987

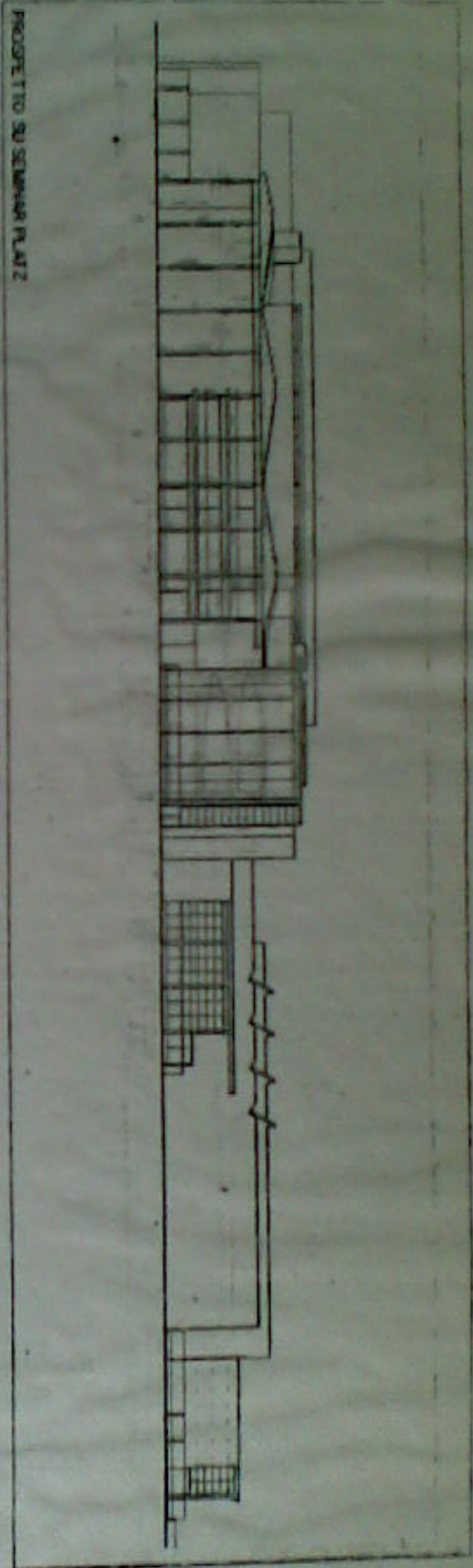
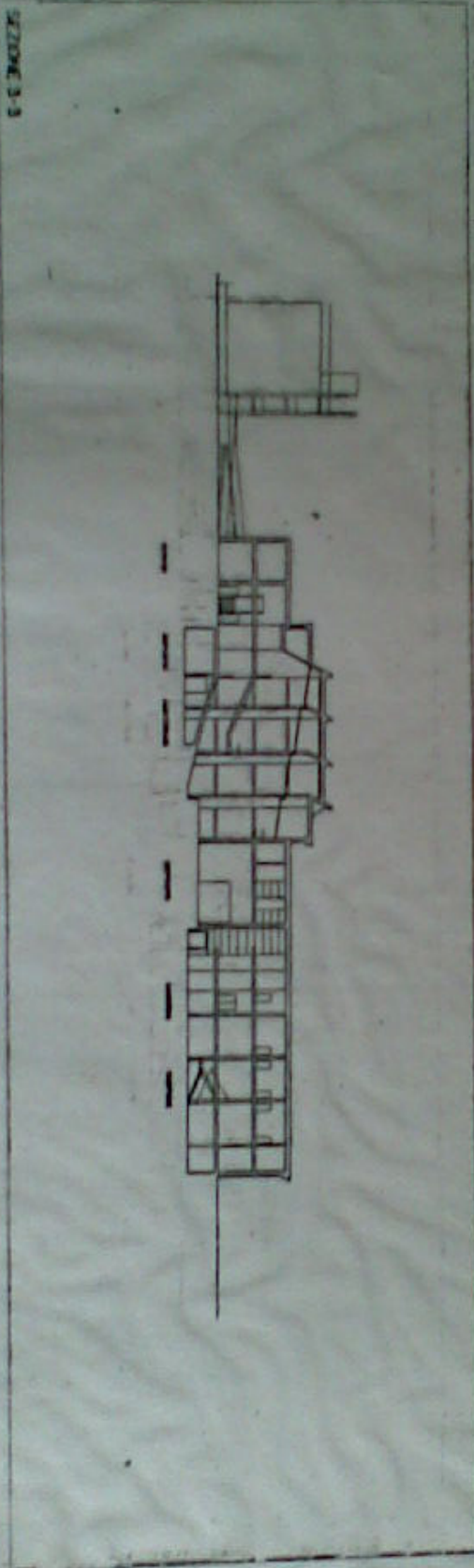
4

PROJECT S. RUFINA
ITALY
URBAN SPACES
PROJECT





PROGETTO ARCHITETTONICO - FUTURE BAUHAUS



future BAUHAUS

Europäischer Architekturstudenten-Wettbewerb 1992/93 "Future Bauhaus"

European Competition for Architectural Students 1992/93 "Future Bauhaus"

European regions

- Belgium
- France
- Netherlands
- Great Britain
- Ireland
- Austria
- Germany
- Switzerland
- Denmark
- Estonia
- Finland
- Norway
- Sweden
- Eugens
- Byelorussia
- Czechia
- Czechia
- Hungary
- Latvia
- Lithuania
- Poland
- Russia
- Slovenia
- Slovakia
- Ukraine
- Czechia
- Italy
- Spain
- Portugal
- Turkey

Filippo Pomponi

Italien

... has participated with a design which met the requirements for an 'Academy at the Bauhaus Dessau' in the competition for European students of architecture, sponsored by the Pilkington Group with the co-operation of the Bauhaus Dessau.

The jury: Professor Hans-Busso von Busse (D), Professor Viktor Lopez Cotoño (E), Prof. David Burton (GB), F. Mels Drouwel (NL), Mike Davis, UDL (UCLA) (GB), Iano Gianda, Arch. (CH), Dipl.-Ing. Heinz W. Krawinkel (D), Professor Dr. Ing. Helmut Stehl (D), Dr. Perio Stolarov (BG), Prof. Dipl.-Ing. Claud Vasconi (F), Lennart Alenrot, C. Eng. (S), Professor Dr. Rolf Kuhn (D) Niels Torp, Arch. MNL (N).

Sponsors:

Flachglas AG (D), Pilkington Floatglas AB (S), Pilkington Glass LTD (GB)



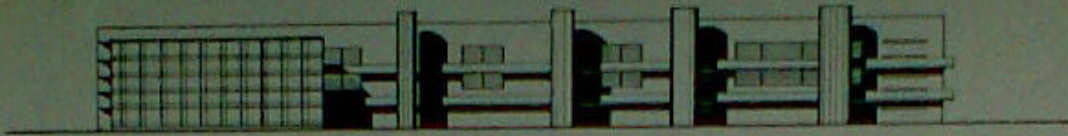
PROF. HANS-BUSSO V. BUSSE
CHAIRMAN OF THE JURY
GERMANY

PROF. VIKTOR LOPEZ COTOÑO
CHAIRMAN OF THE JURY
SPAIN

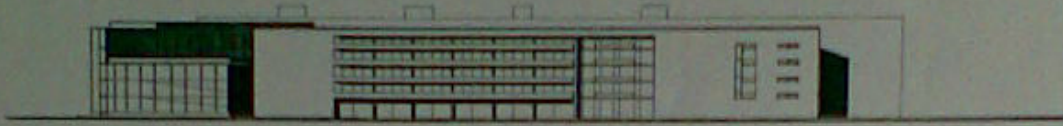
DR. HEINZ W. KRAWINKEL
VORSTANDSGLEDER
FLACHGLAS AG
GERMANY

TOMMY BERGDHAL
CHIEF DEPUTY
PILKINGTON FLÖTGLAS AB
SWEDEN

SIR ANTHONY PILKINGTON
CHAIRMAN
PILKINGTON PLC
GREAT BRITAIN



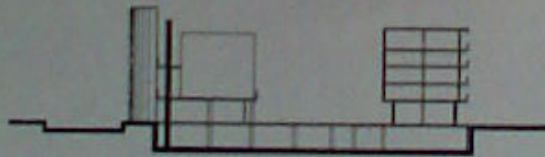
N / E ELEVATION 1500



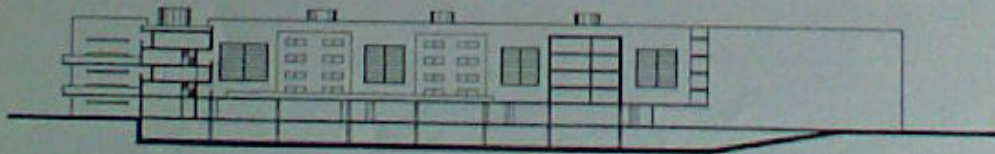
S / E ELEVATION 1500



N / W ELEVATION 1500

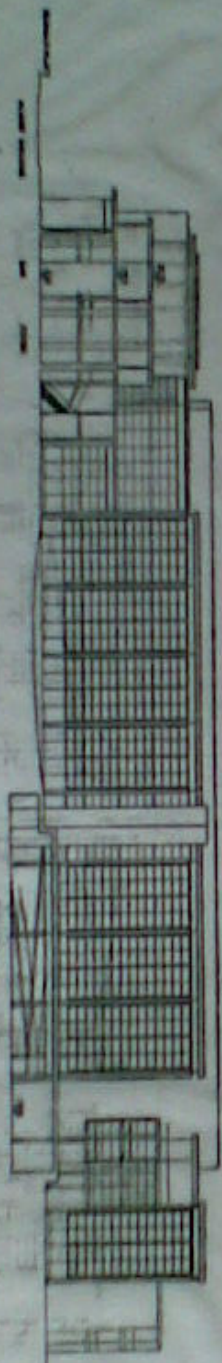


CROSS SECTION 1500

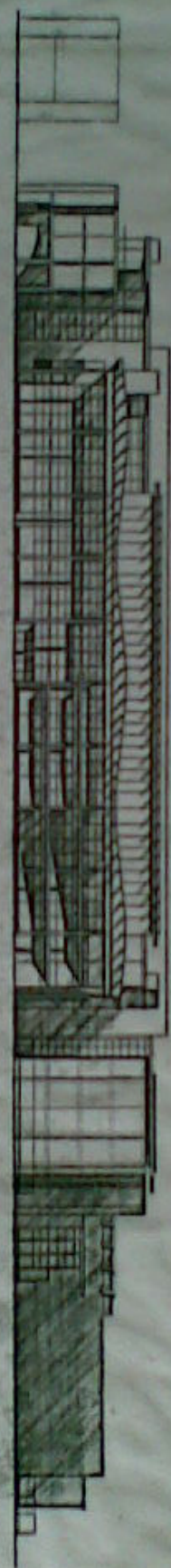


LONG SECTION 1500

SEZIONE 2-2



PROSPETTO SU BAUHAUS STRASSE



SEZIONE 1-1

